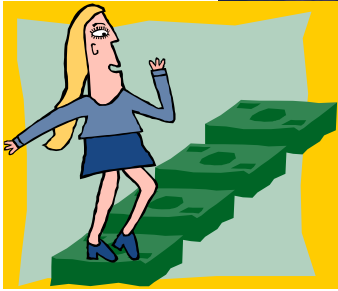


# SPECTRUM HOUSING ASSISTANCE COUPON PAYMENTS



1st  
Year

2nd & 3rd  
Year

4th & 5th  
Year

NUMBER OF  
BEDROOMS  
FAMILY  
QUALIFIES  
FOR:

**ONE  
BEDROOM**

VPS-(20% of Gross Income)\*  
=  
**Subsidy Amount**

**\$350.00**

**\$200.00**

**TWO  
BEDROOM**

VPS-(20% of Gross Income) \*  
=  
**Subsidy Amount**

**\$450.00**

**\$300.00**

**THREE OR  
MORE  
BEDROOMS**

VPS-(20% of Gross Income)\*  
=  
**Subsidy Amount**

**\$600.00**

**\$400.00**

**S  
E  
L  
F  
-  
S  
U  
F  
F  
I  
C  
I  
E  
N  
T**

\*If a participant receives only TANF, the welfare rent will be used instead of 20% of Gross Income.

If first year subsidy amount is lower than step three—you will receive the step three amount for 5 years.

If first year subsidy amount is lower than step two but higher than step three—you will receive second year subsidy amount for 3 years then go to step three for last two years.

- VPS—VOUCHER PAYMENT STANDARD (DEFINED BY HUD)—This amount is subject to change
- When gross rent is lower than VPS—the gross rent amount will be used
- Effective 10-01-04—VPS for 1 Bedroom = \$656; VPS for 2 Bedroom = \$822; VPS for 3 Bedroom = \$992